

GOBI TOYOTA LAND CRUISER FJ 40 ROOF RACK INSTALLATION INSTRUCTIONS

The rack must be inspected before each use to make certain attachments are secure, and for evidence of Wear. Misuse of the rack or failure to observe the manufacturer's instructions as to installation, proper Attachment and maintenance will void any warranties that may be implied by law.

TOOLS REQUIRED FOR INSTALLATION:

- 1- 9/16" Socket with extension
- 1- 3/4" Socket
- 1- 13mm socket
- 1- 1/2" box or open end wrench
- 1- large ACR phillips screw driver bit
(ACR anti cam out)

GOBI TOYOTA LAND CRUISER FJ 40 ROOF RACK INSTALLATION INSTRUCTIONS

Guidelines:

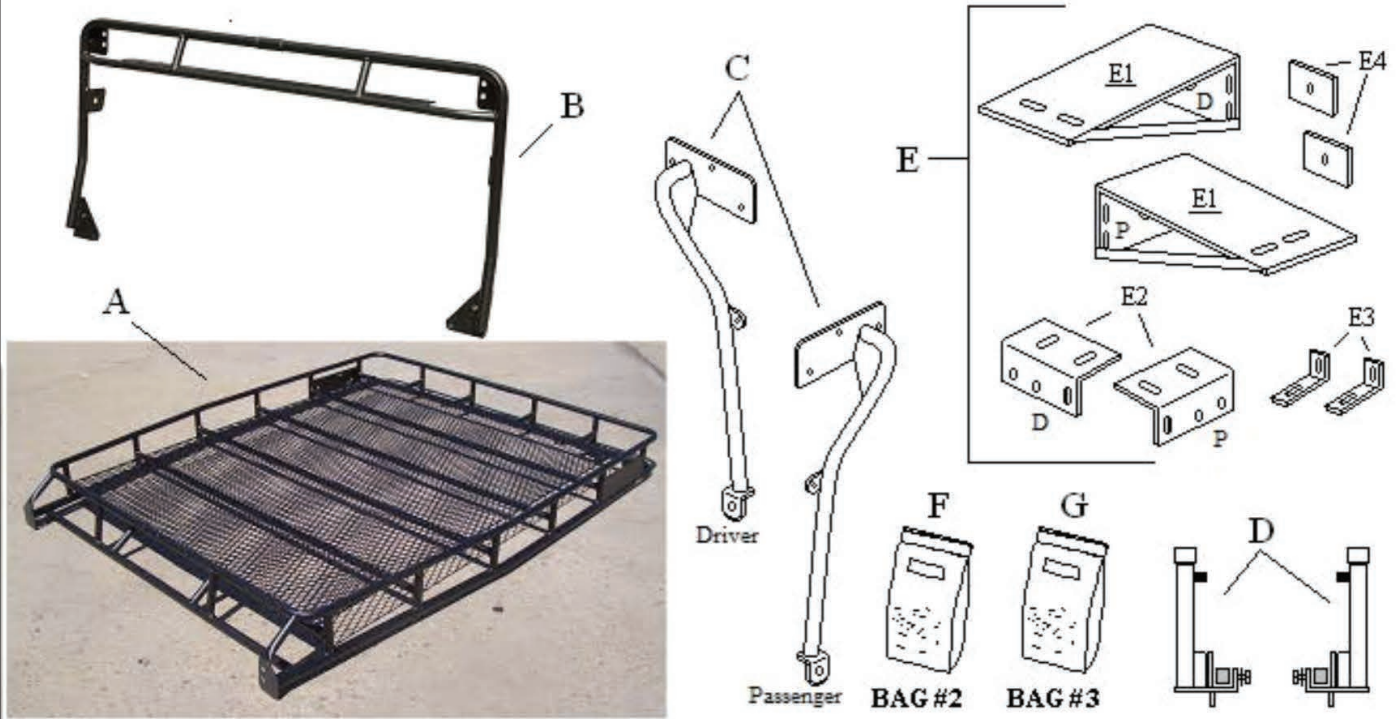
When using Load Carriers and Accessories, the user must understand the precautions. The points listed below will assist you in using the rack /carrier system and will encourage safety.

- For quality fits and safety, use only the recommended rack or accessory. Do not assume an accessory will fit, always check with dealer when obtaining new accessories. Use only approved accessories on load carriers. Using other brands will void your warranty.
- Make sure all knobs, bolts, screws, straps, and locks are firmly attached, tightened and locked before every trip. Knobs, bolts, screws, straps, and locks must be periodically inspected for signs of wear, corrosion, and fatigue. Check your load at stops during the trip to insure continued fastening security.
- Check local and state laws governing projection of objects beyond the width of a vehicle. **Be aware of the width and height of your cargo since low clearance branches, bridges, and parking garages can affect the load** All cargo will affect the vehicle's driving behavior. Never drive with any lock, knob, or rack in an open or unlocked position. All long loads such as, but not limited to sailboards, surfboards, kayaks, canoes, and lumber must be tied down front and rear to the bumpers or tow hooks, of the vehicle.
- Remove your rack accessories when they are not in use, before entering car washes, prior to taking in your vehicle for service, and whenever clearance may be an issue.
- All locks must be turned and moved periodically to insure smooth operation. Use graphite or similar dry lubricant to help this. Locks are designed to deter vandalism and theft. Remove valuable gear if your vehicle is unattended for an extended period. Place at least one key in the glove compartment.
- For safety to your vehicle and rack system, obey all posted speed limits and traffic cautions. Adapt your speed to the conditions of the road and the load being carried.
- Do not use load carriers and accessories for purposes other than those for which they were designed. Do not exceed their carrying capacity.
- Consult with your dealer if you have any questions regarding the operations and limits of this product. Review all instructions carefully.

GOBI TOYOTA LAND CRUISER FJ 40 ROOF RACK INSTALLATION INSTRUCTIONS

Included in kit

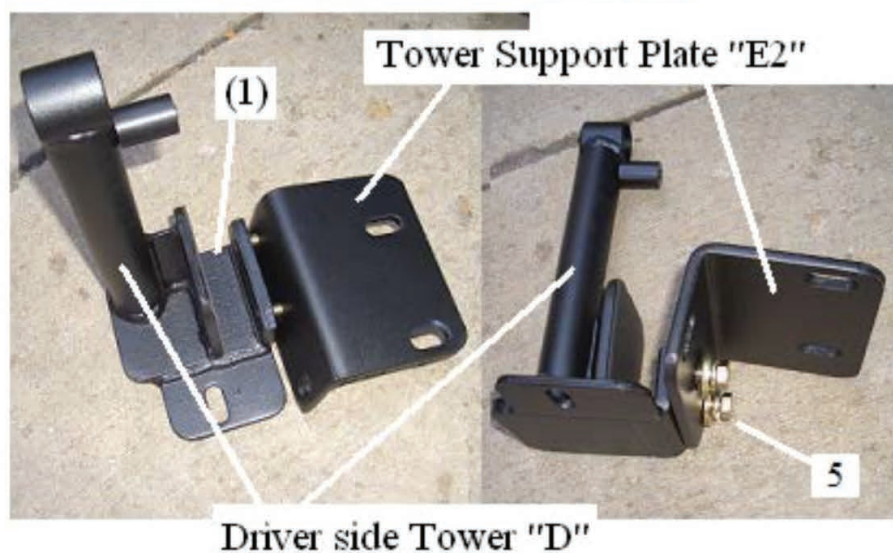
Letter	Description	Location	Quantity
A	GOBI TOYOTA LAND CRUISER FJ 40 ROOF RACK	Main box	1
B	GOBI TOYOTA LAND CRUISER FJ 40 LIGHT BAR	Strapped to Rack	1
C	GOBI TOYOTA LAND CRUISER REAR ROOF RACK SUPPORT BARS	Strapped to Rack	1
D	Rear Rack Support Towers Passenger and Drivers Side	Hardware Box	1 ea.
E	Rear Tower support plate Passenger and Driver Side Assembly	Hardware Box	1 ea.
F	<p>GOBI RACK MOUNTING HARDWARE</p> <p><u>CONTENTS:</u></p> <p>4 Nylon Shoulder washers 4 1/2" Flat Washers SS 2- 1/2" x 2-1/2" Hex Head Bolts SS 2- 1/2" Nylock nut SS</p> <p>Light bar mounting hardware located in separate Bag #2a inside Bag #2</p> <p>18- 3/8-16 x 1" Carriage bolts SS 20- 3/8" Flat washer SS 18- 3/8" Nylock nuts SS 2- 3/8-16 x 1" Hex bolt SS 2- 3/8" Lock washer SS 4- M8 x 30mm Hex screw SS Bag #6</p> <p>4- M8 x 30mm Hex screw SS 4- 5/16" Flat washer SS 4- 5/16" Lock washer SS</p> <p>Use OEM flat head windshield screws for outside Gobi light bar mounting screws page 8 Fig. 20</p>	BAG #2 Hardware Box	1
G	<p>GOBI RACK ISOLATOR HARDWARE</p> <p><u>CONTENTS:</u></p> <p>4- Black Oval adhesive backed wear plates (Place on vehicle body under Rubber isolators 22,23)</p> <p>2- Black Oval nylon adhesive backed wear plates (Place on vehicle body under Tower stand offs (13))</p>	BAG #3 Hardware Box	1



GOBI TOYOTA LAND CRUISER FJ 40 ROOF RACK INSTALLATION INSTRUCTIONS

**Fig. 1**

Park your vehicle on a level surface. Locate the rear driver side quarter panel marker light and place at its center to the bottom of the quarter panel a strip of masking tape as shown. Use a level to make certain the tape edge is vertically straight. If you should have a fender flair you can move the masking tape edge to the rear up to 1".

**Fig. 2**

Refer to page 3 and locate from your hardware kit Driver side Tower (D) and support plate (E2) pre-assembled. Remove the aluminum pinch block as shown in Fig. 3 from Tower (D) and keep in close proximity for later use. Keep the hex head screws (5) in place so that the tip of each screw just enters into the Tower (D) clamp area (1) as shown in Fig. 2.

**Fig. 3**

Place on the inner lip of the Driver side quarter panel the aluminum pinch block just removed from the driver side Tower (D). Make certain that the inner quarter panel lip is free from all debris prior to install. Hold the aluminum pinch block in place at approximately the center of the masking tape line with one hand at this time.

GOBI TOYOTA LAND CRUISER FJ 40 ROOF RACK INSTALLATION INSTRUCTIONS

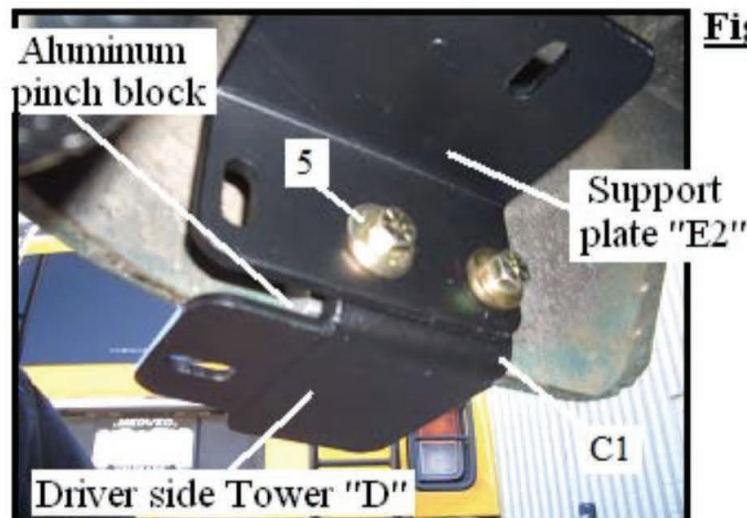


Fig. 6 (Clean rear quarter panels prior to install)

Slide Tower (D) over the rear driver side body panel as shown in Fig. 6, Fig. 7 and Fig. 7a so that Tower clamp plate (C) rests on the outside of the driver side body panel and that inner clamp (C1) rests over the aluminum pinch block. Make certain that Tower (D) is pushed up as high as possible so that the inside bottom of Tower (D) is in contact with the lower body lip as shown in Fig. 6. Push support plate (E2) up as high as possible and snug down both 3/8-16 x 1-1/8" hex head clamp screws (5) with a 9/16" ratchet or box end wrench. Do not fully tighten screws at this time.

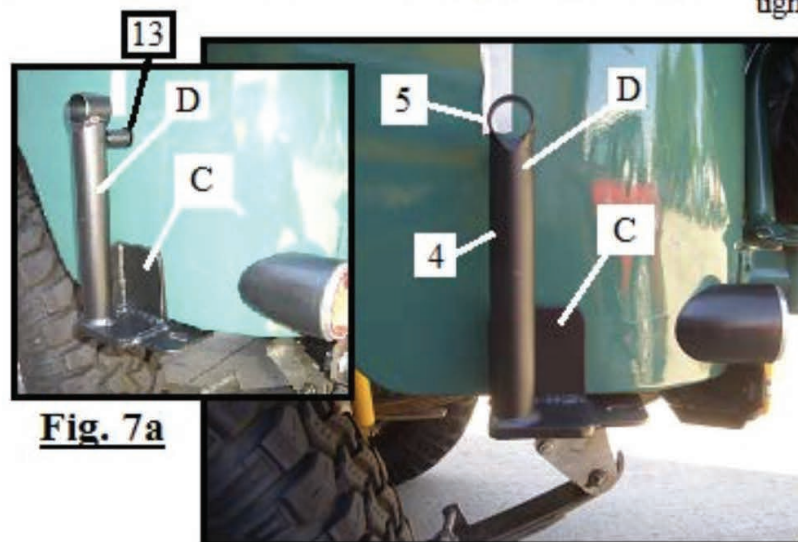


Fig. 7

Center Tower (D) so when properly lined up the Tower tube (4) and (5) are in line with the masking tape marker as shown in Fig. 7. Also make certain the aluminum pinch block is contacted by both screws (5) then fully tighten both hex screws (5) as shown in Fig. 6 with a 9/16" ratchet or box end wrench. After tightening make certain Tower (D) is still in line with masking tape marker. Remove from Bag #3 of your hardware kit two round black nylon wear pads, peel off the adhesive backed protective film and place behind Tower (D) stand off's (13) both driver and passenger sides as shown in Fig. 7a.

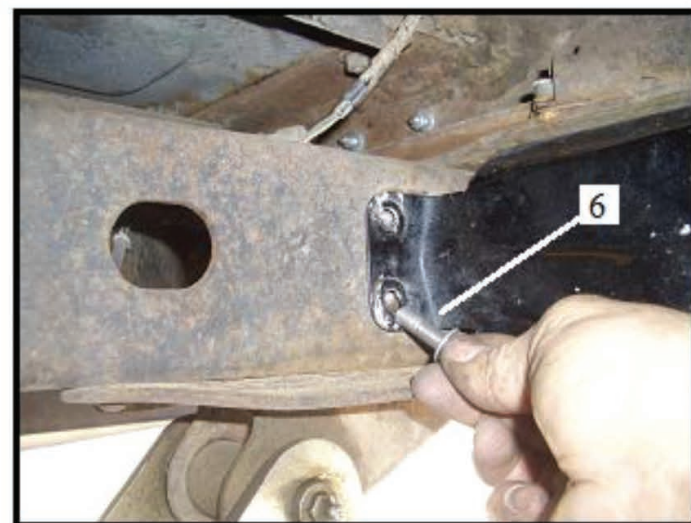


Fig. 8

Remove the Driver side rear lamp cover screws, lock washers and flat washers (6) from the frame as shown in Fig. 8. Replacement screws M8 x 30mm located in Bag #2 in a separate Bag marked #6 will be used at a later time. Retain the lock washers and flat washers as they will be used with the new longer screws.

GOBI TOYOTA LAND CRUISER FJ 40 ROOF RACK INSTALLATION INSTRUCTIONS

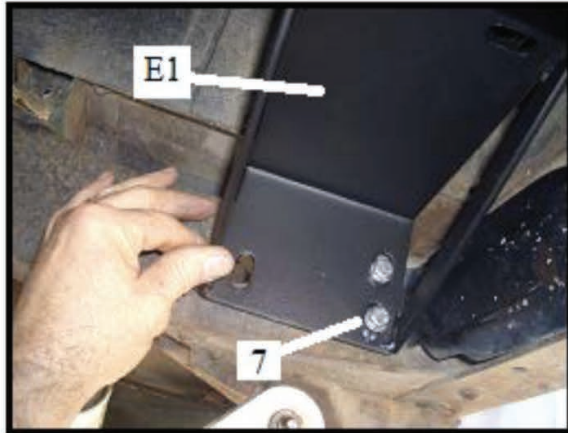


Fig. 9



Fig. 10

Place the driver side tower support bracket (E1) under driver side tower support plate (E2) and against vehicle frame as shown in Fig. 9, 12 and 13. Install two M8 x 30 hex head screws (7) supplied in Bag #6 inside Bag #2 and the original lock washers and flat washers then snug down. Do not fully tighten at this time.

Slide nut plate (E4) supplied in your hardware kit inside driver side vehicle frame and behind support bracket (E1) as shown in Fig. 10 and 11. Use a 3/8-18 x 1" hex head screw, lock washer and flat washer (9) located in Bag #2 of your hardware kit and thread into nut plate. Snug down only at this time. Do not fully tighten.



Fig. 11

Fig. 11 shows nut plate (E4) installed properly inside vehicle frame and behind tower support plate (E1) using a 3/8-16 x 1" hex head screw, lock washer and flat washer (9). Not fully tightened at this time.



Fig. 12

Set tower support bracket (E1) under tower support plate (E2) as shown in Fig. 12 and 13. Make certain support bracket (E1) is as close as possible but not pushing up on support plate (E2). Snug down tower support bracket (E1) at this time. Do not fully tighten.

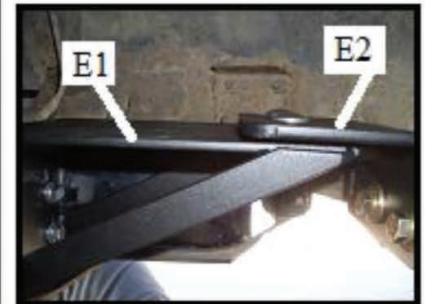
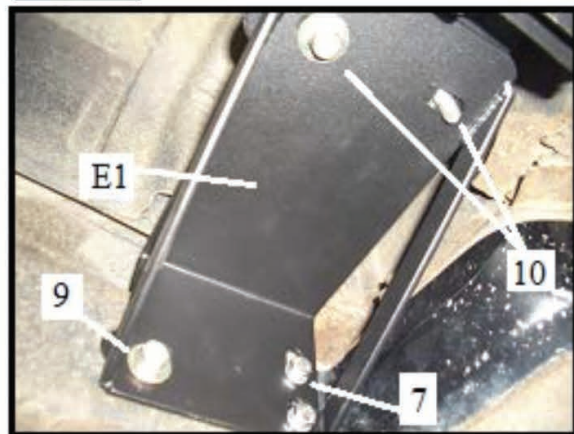
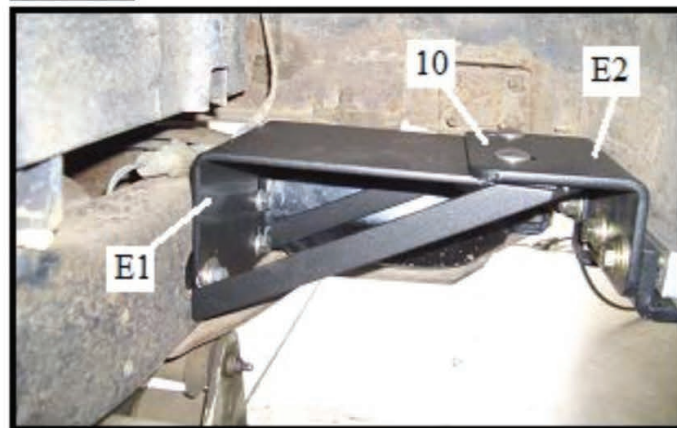
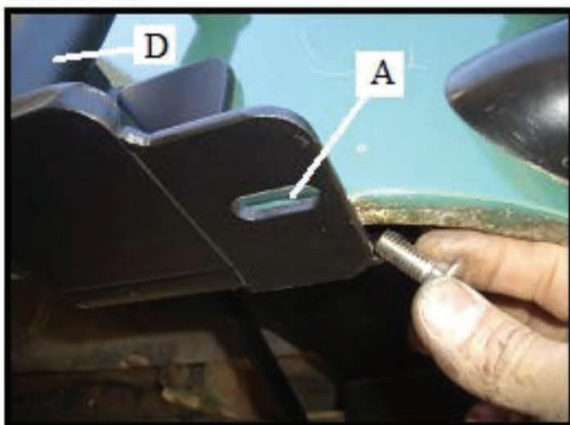
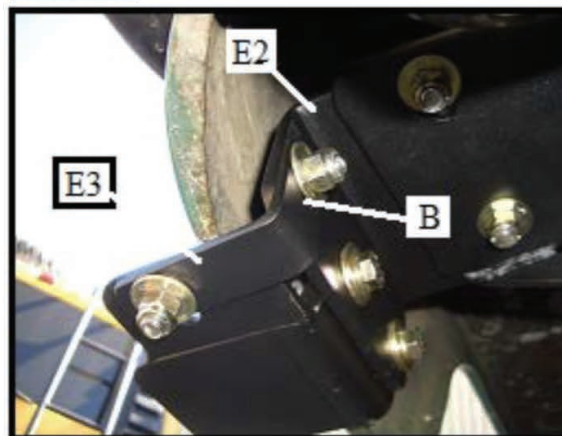


Fig. 13

GOBI TOYOTA LAND CRUISER FJ 40 ROOF RACK INSTALLATION INSTRUCTIONS

Fig. 14**Fig. 15**

Slide two 3/8-16 x 1" carriage bolts (10) located in Bag #2 of your hardware kit down through tower support plate (E2) as shown in Fig. 15 then through support bracket (E1) as shown in Fig. 14 and finger tighten in place using two 3/8" flat washers and nylock nuts located in Bag #2. In the following order fully tighten all three screws (9) and (7) securing tower support bracket (E1) to vehicle frame as shown in Fig. 14 then tighten both carriage bolts (10) securing tower support plate (E2) to tower support bracket (E1) shown in Fig. 14 and 15.

Fig. 16**Fig. 17**

Slide one 3/8-16 x 1" carriage bolt through slot (A) of driver side tower (D) as shown in Fig. 16 and one 3/8-16 x 1" carriage bolt through slot (B) of tower support plate (E2) as shown in Fig. 17. Place "L" bracket (E3) located in your hardware kit onto both carriage bolts and fully tighten in place using two 3/8" flat washers and nylock nuts located in Bag #2 of your hardware kit.

GOBI TOYOTA LAND CRUISER FJ 40 ROOF RACK INSTALLATION INSTRUCTIONS

Fig. 18**Fig. 19**

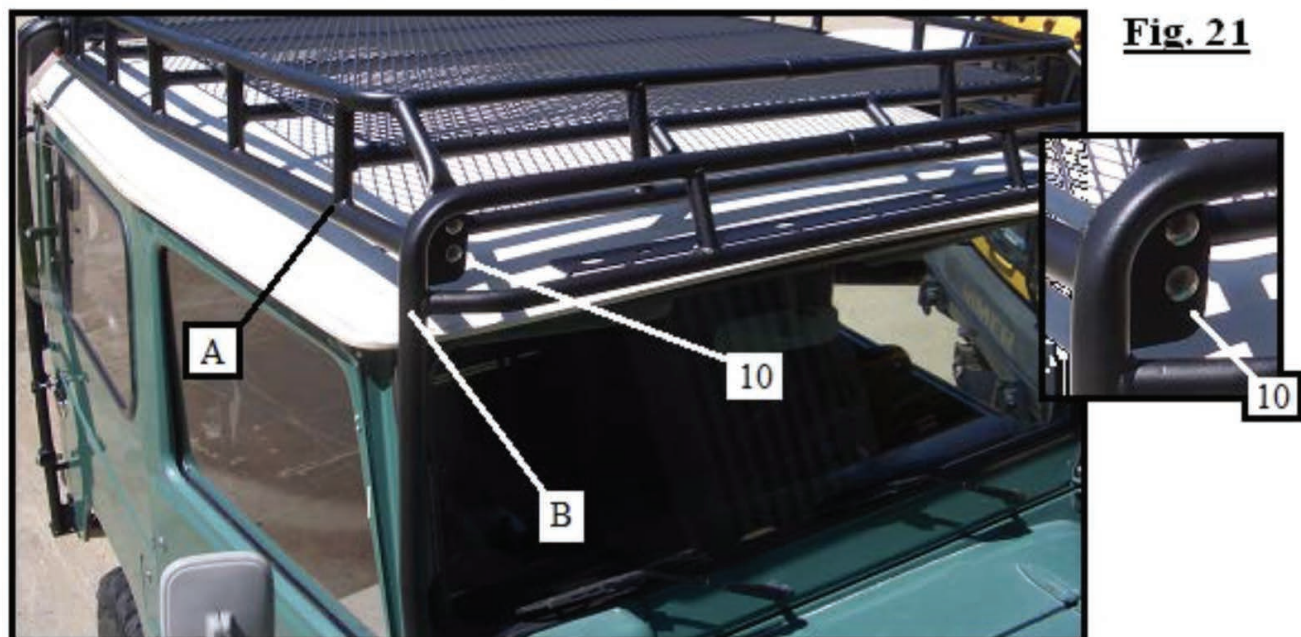
Driver side tower support is now fully installed and complete provide the same procedure for the passenger side tower installation.

Fig. 20

Remove all 4 phillips flat head screws from both sides of the vehicle windshield frame as shown in Fig. 20 above. Slide the Gobi light bar over both sides as shown in Fig. 21 and use the original phillips flat head screws for the side screw installation only then refer to page 3 and remove four M8 x 25mm hex head screws, lock washers and flat washers located in a separate bag in Bag #2 thread in place and fully tighten all 8 screws.

**Fig. 21**

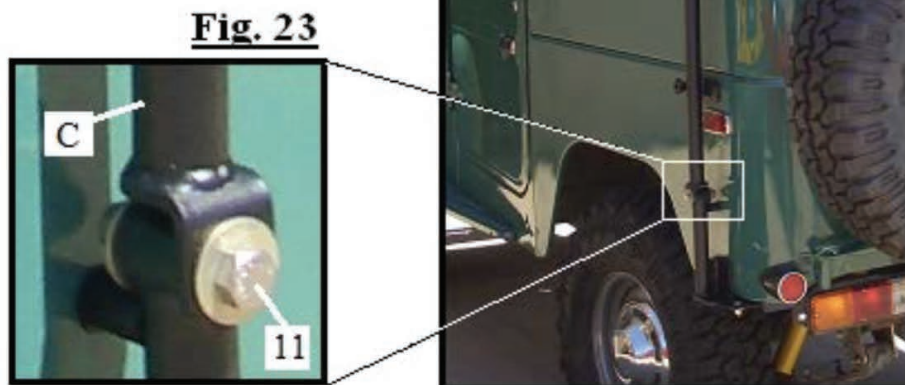
GOBI TOYOTA LAND CRUISER FJ 40 ROOF RACK INSTALLATION INSTRUCTIONS



Place a blanket over the top of your vehicle at this time to prevent any scratching or marring of the paint. Then lift Gobi rack (A) with the help of others onto the vehicle roof top as shown in Fig. 21 and secure roof rack (A) to light bar (B) using four 3/8-16 x 1" carriage bolts, flat washers and Nylock nuts (10) located in Bag #2 of your hardware kit. Leave screws snug, do not fully tighten at this time.

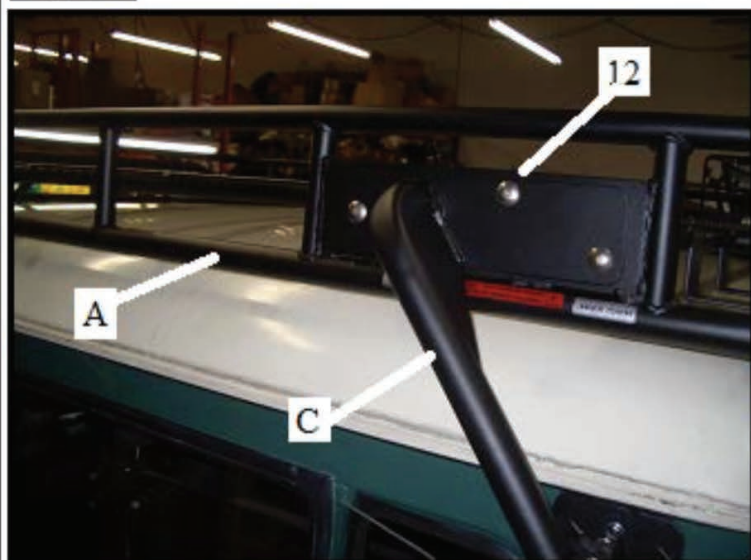
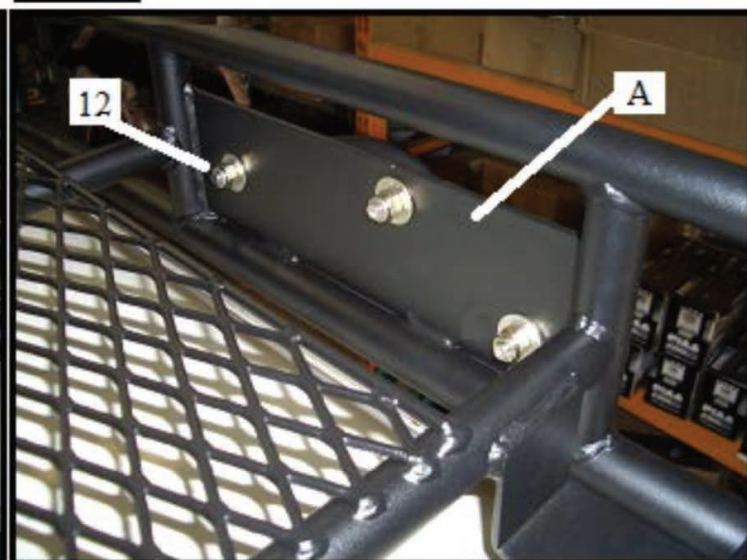
Fig. 22

Refer to page 3 and remove both the rear roof rack support bars (C) from your hardware kit. Place the Driver side rear support bar marked with a stamped letter "D" or sticker "Driver side" on the driver side Tower as shown in Fig. 22 and Fig. 23 using one 1/2" x 1-1/2" hex head bolt, two 1/2" flat washers and one 1/2" Nylock nut (11) located in Bag #2 of your hardware kit. Snug down only, Do not fully tighten at this time.

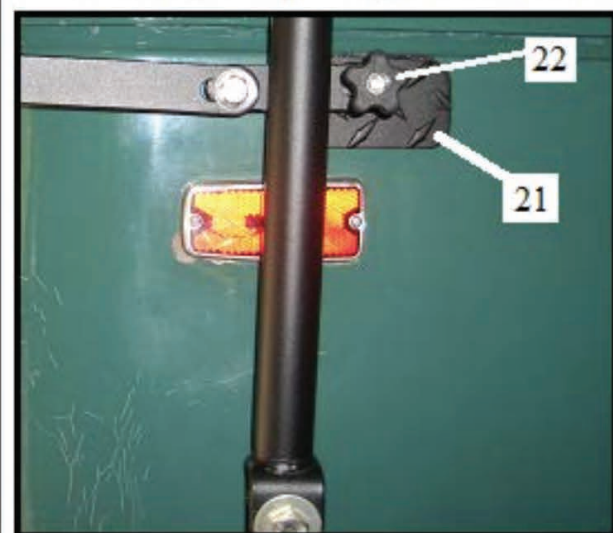
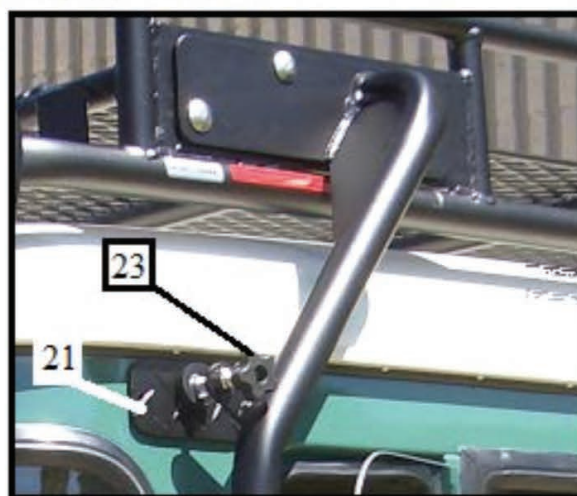


GOBI TOYOTA LAND CRUISER FJ 40 ROOF RACK INSTALLATION INSTRUCTIONS

H

Fig. 24**Fig. 25**

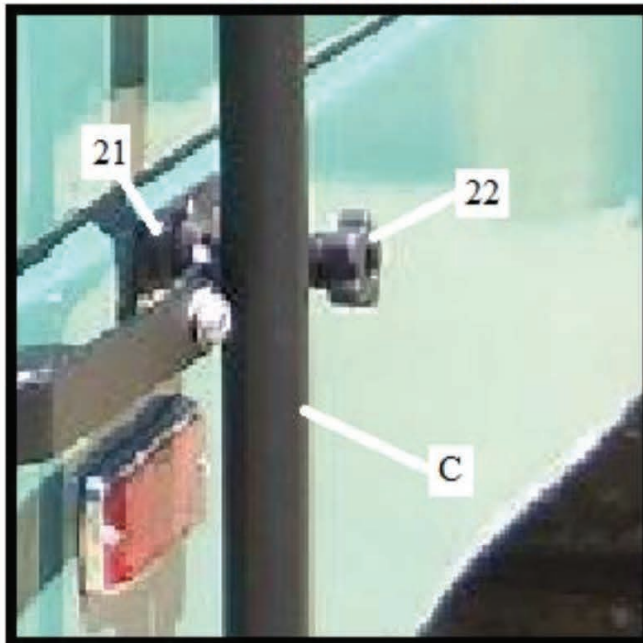
Continue to install the driver side rear support bar (C) to the rear driver side roof rack (A) by lining up all three holes of the driver side upper rear support bar (C) to the drivers side rear roof rack holes as shown in Fig. 24 and Fig. 25 using three 3/8-16 x 1" carriage bolts, flat washers and Nylock nuts (12) located in Bag #2 of your hardware kit. Snug down screws only at this time. Provide the same procedure to the passenger side. Once both driver and passenger side support bars (C) have been installed lift up roof rack as high as possible and fully tighten all upper support bar screws (12) both sides and follow by fully tightening lower support bar screws (11) as shown on page 9 Fig. 23. Continue to the front of the roof rack and light bar and lift roof rack as high as possible and tighten all screws (10) both passenger and driver sides as shown on page 9 Fig. 21.

**Fig. 26****Fig. 27**

Clean off the area behind each adjustable isolator knob (22) and (23) with denatured alcohol then peel off the protective adhesive backing behind isolator pads (21) located in Bag #3 of your hardware kit and place under both the adjustable isolator knobs mid point of each pad as shown in Fig. 26 and Fig. 27.

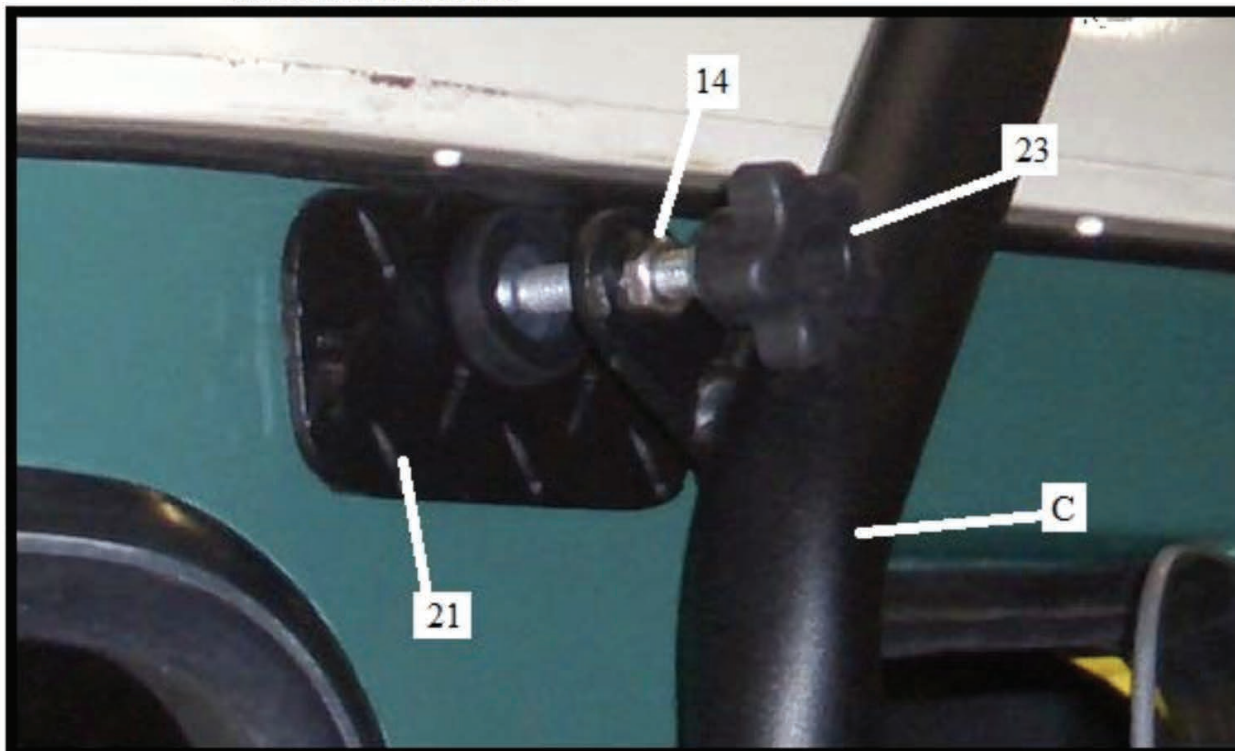
GOBI TOYOTA LAND CRUISER FJ 40 ROOF RACK INSTALLATION INSTRUCTIONS

Fig. 28 LOWER ISOLATOR

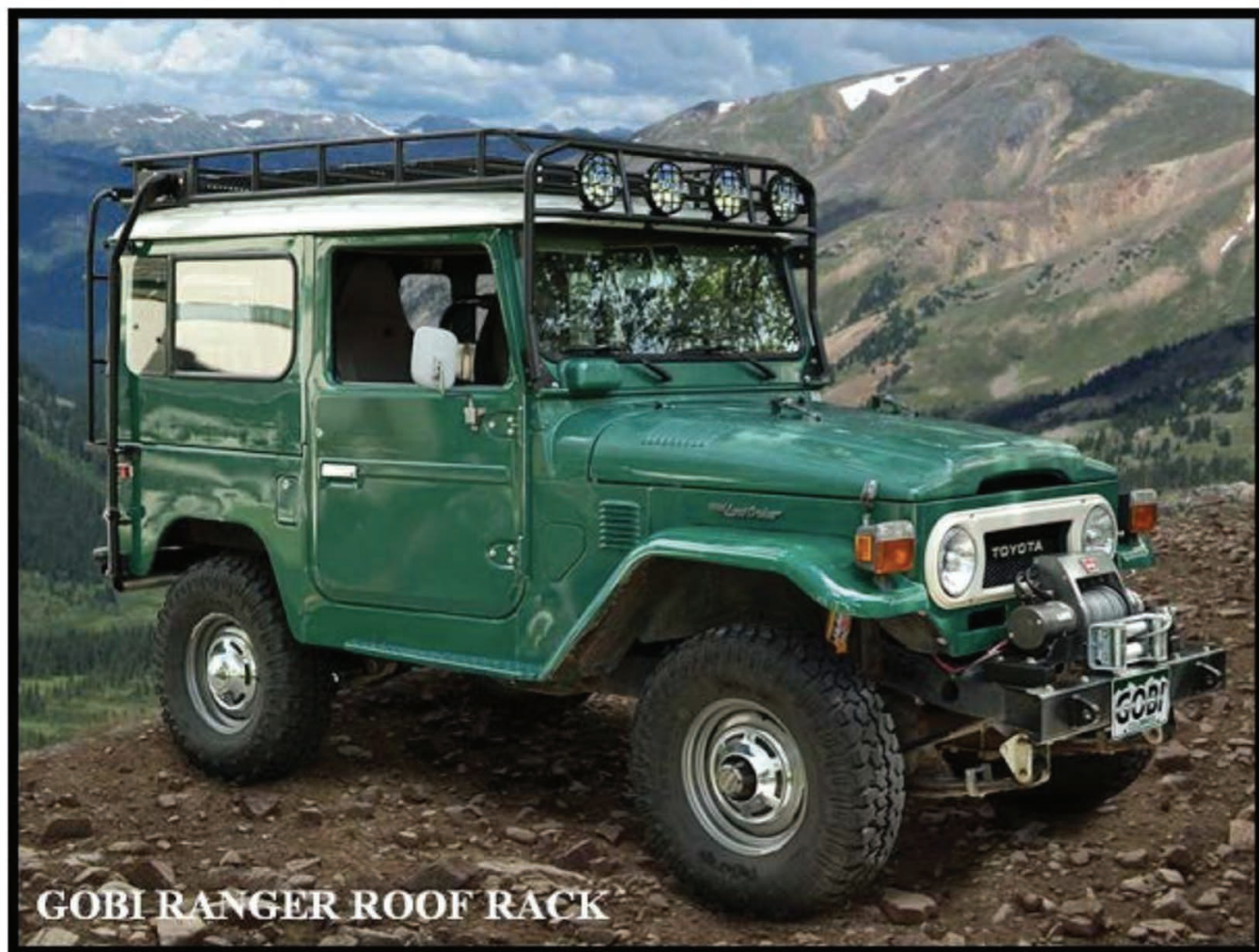


After fully tightening all roof rack support bars and light bar screws follow by adjusting all four isolators knobs (22) and (23) as shown in Fig. 28 and 29. If you have a soft top adjust only isolator knobs (22) as isolator knobs (23) are not used. As shown in Fig. 29 below loosen all jam nuts (14) on all four isolators knobs. Screw in lower isolator knobs (22) as shown in Fig. 28 both passenger and driver sides just above each support tower (D) until they make contact with pad (21). Continue to tighten isolator knobs (22) both passenger and driver side at least four full additional revolutions while pulling out on support bar (C) to apply pressure against pad (21). This will prevent excessive roof rack sway or movement during use. Continue up to isolator knobs (23) both passenger and driver sides. Adjust isolator knobs (23) by screwing in knobs until they make contact with isolator pad (21) then add an additional 1/2 turn. After adjusting all isolator knobs secure in place by tightening all four jam nuts (14) to prevent loosening during use.

Fig. 29 UPPER ISOLATOR



GOBI TOYOTA LAND CRUISER FJ 40 ROOF RACK INSTALLATION INSTRUCTIONS



GOBI TOYOTA LAND CRUISER FJ-40 ROOF RACK INSTALLTION COMPLETE