

# GOBI TOYOTA 4 RUNNER 95-02 REAR DOOR LADDER WITH OR WITHOUT SPOILER INSTALLATION INSTRUCTIONS

*The Gobi ladder must be inspected before each use to make certain attachments are secure, and for evidence of Wear. Misuse of the ladder or failure to observe the manufacturer's instructions as to installation, proper Attachment and maintenance will void any warranties that may be implied by law.*

## CAUTION

"LADDER IS TO BE TRAVERSED UPON  
ONLY  
WHEN THE REAR DOOR IS FULLY  
CLOSED AND LOCKED"

## GOBI TOYOTA 4 RUNNER 95-02 REAR DOOR LADDER WITH OR WITHOUT SPOILER INSTALLATION INSTRUCTIONS

### Guidelines:

When using Load Carriers and Accessories, the user must understand the precautions. The points listed below will assist you in using the rack /carrier system and will encourage safety.

- For quality fits and safty, use only the recommended rack or accessory. Do not assume an accessory will fit, always check with dealer when obtaining new accessories. Use only approved accessories on load carriers. Using other brands will void your warrenty.
- Make sure all knobs, bolts, screws, straps, and locks are firmly attached, tightened and locked before every trip. Knobs, bolts, screws, straps, and locks must be periodically inspected for signs of wear, corrosion, and fatigue. Check your load at stops during the trip to insure continued fastening security.
- Check local and state laws governing projection of objects beyound the width of a vehicle. **Be aware of the width and height of your cargo since low clearance branches, bridges, and parking garages can affect the load** All cargo will affect the vehicle's driving behavior. Never drive with any lock, know, or rack in an open or unlocked position. All long loads such as, but not limited to sailboards, surfboards, kayaks, canoes, and lumber must be tied down front and rear to the bumpers or tow hooks, of the vehicle.
- Remove your rack accessories when they are not in use, before intering car washes, prior to taking in your vehicle for service, and whenever clearance may be an issue.
- All locks must be turned and moved periodically to insure smooth operation. Use graphite or similar dry lubricant to help this. Locks are designed to deter vandalism and theft. Remove valuable gear if your vehicle is unattended for an extended period. Place at least one key in the glove compartment.
- For safety to your vehicle and rack system, obey all posted speed limits and traffic cautions. Adapt your speed to the conditions of the road and the load being carried.
- Do not use load carriers and accessories for purposes other than those for which they were designed. Do not exceed their carrying capacity.
- Consult with your dealer if you have any questions regarding the operations and limits of this product. Review all instructions carefully.

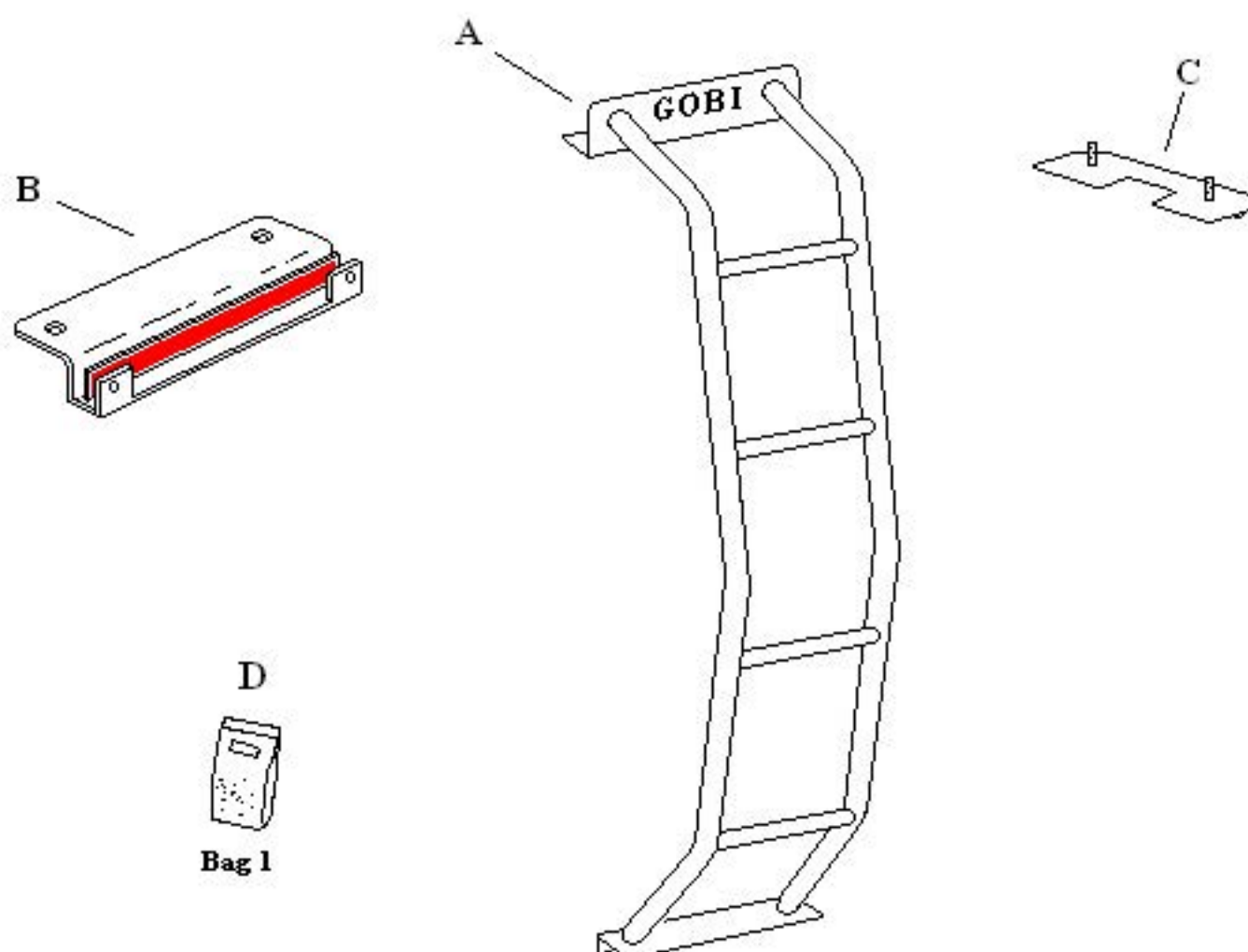
# GOBI TOYOTA 4 RUNNER 95-02 REAR DOOR LADDER

## WITH OR WITHOUT SPOILER

### INSTALLATION INSTRUCTIONS

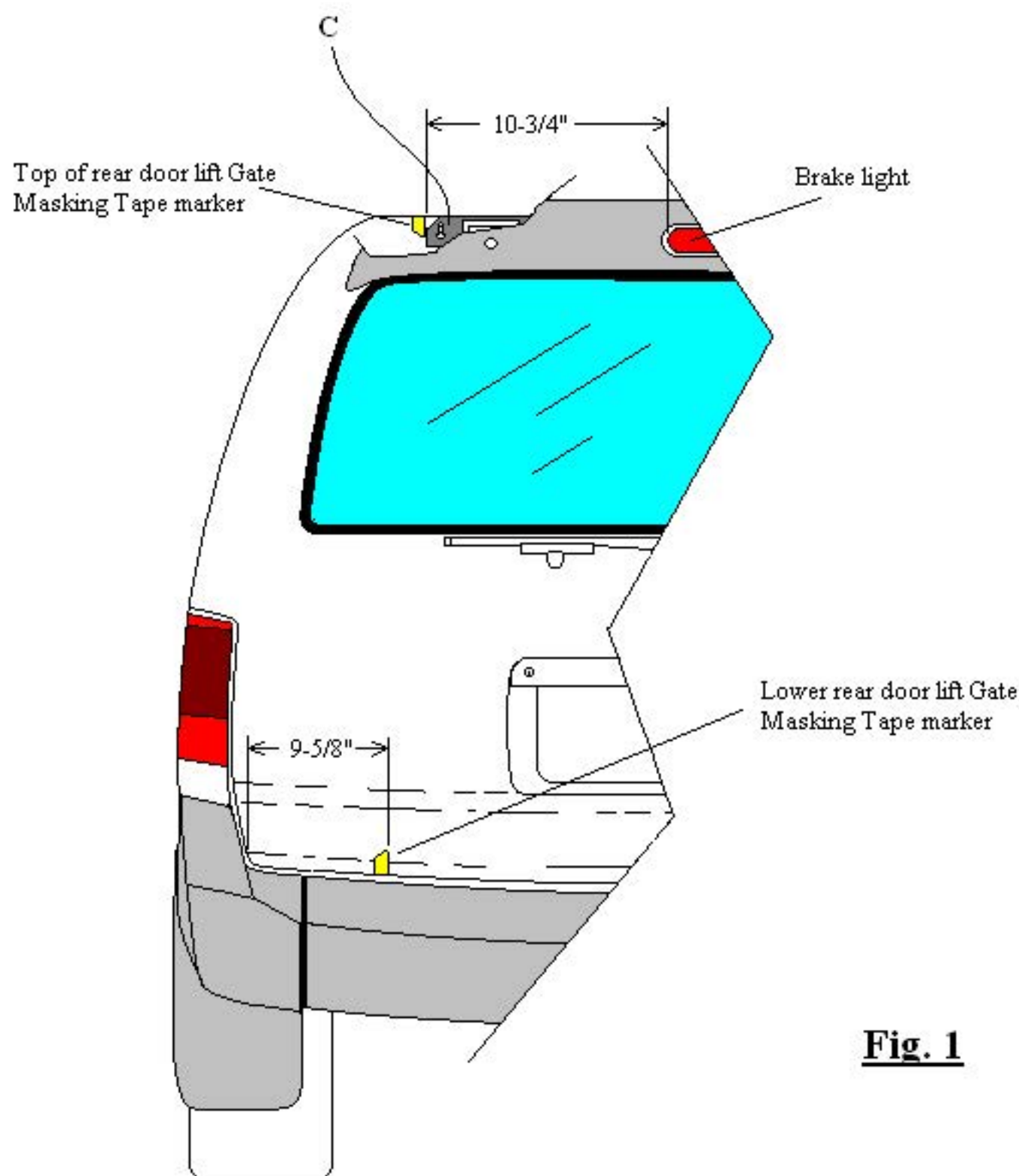
Included in kit

Letter	Description	Location	Quantity
A	TOYOTA 96-02 4 RUNNER REAR DOOR LADDER	Main box	1
B	LOWER LADDER CLAMP	strapped to ladder	1
C	LADDER HANGER BRACKET	strapped to ladder	1
D	<p>GOBI LADDER MOUNTING HARDWARE</p> <p>CONTENTS: 2-Black nylon spacer washers 2- 5/16" Nylock nuts SS 2- 5/16" Lock washer SS 2- 5/16" Black neoprene cup washers SS 1- 3/16" Allen wrench 1- 1/8" Allen wrench</p> <p>2- 5/16" x 1" Button head screws SS 2- 5/16" Flat washers SS 2- 5/16" Lock washers SS</p> <p>Pre-assembled to bottom of ladder</p>	BAG #1	1

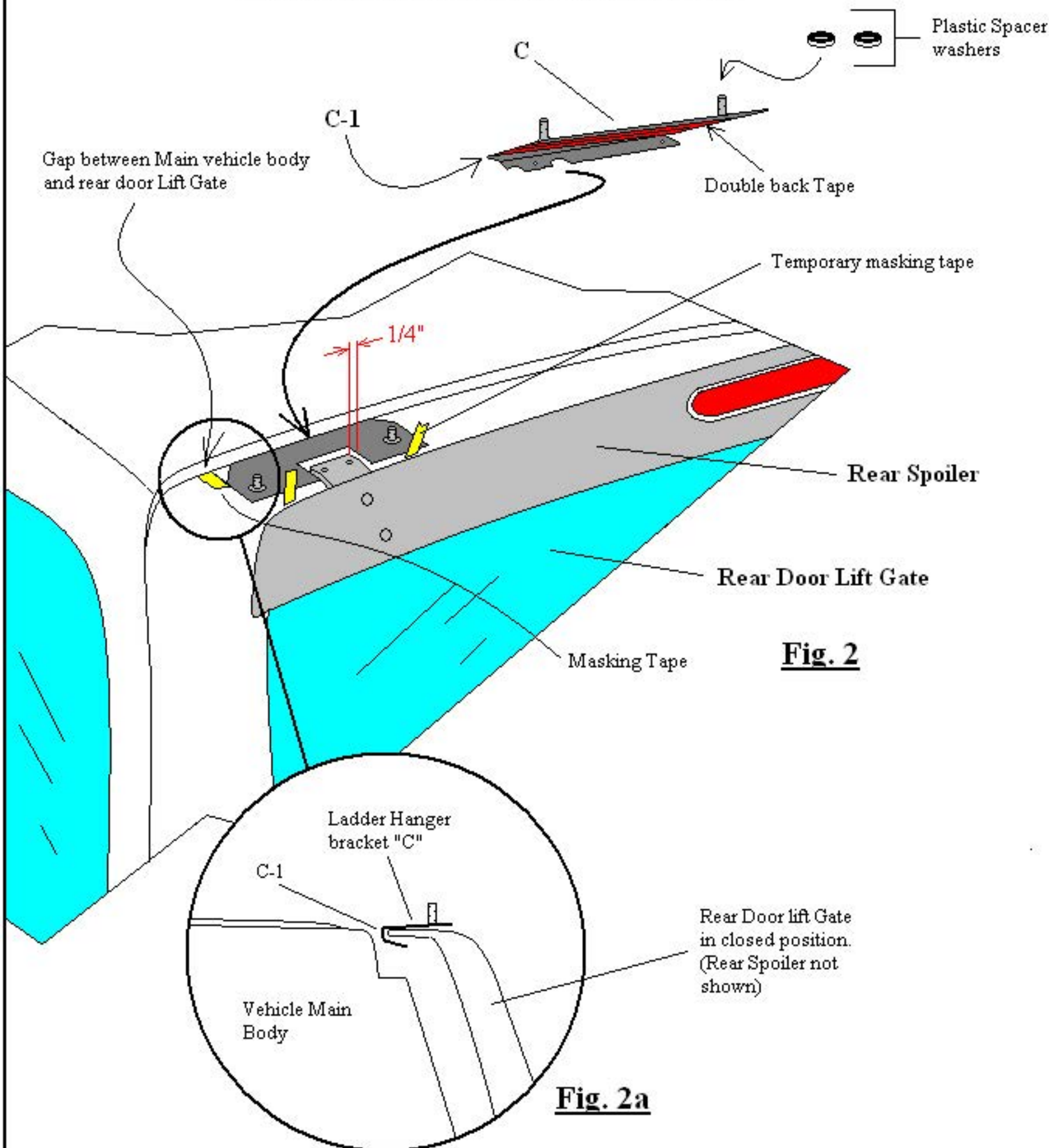




# GOBI TOYOTA 4 RUNNER 95-02 REAR DOOR LADDER WITH OR WITHOUT SPOILER INSTALLATION INSTRUCTIONS

**Fig. 1**

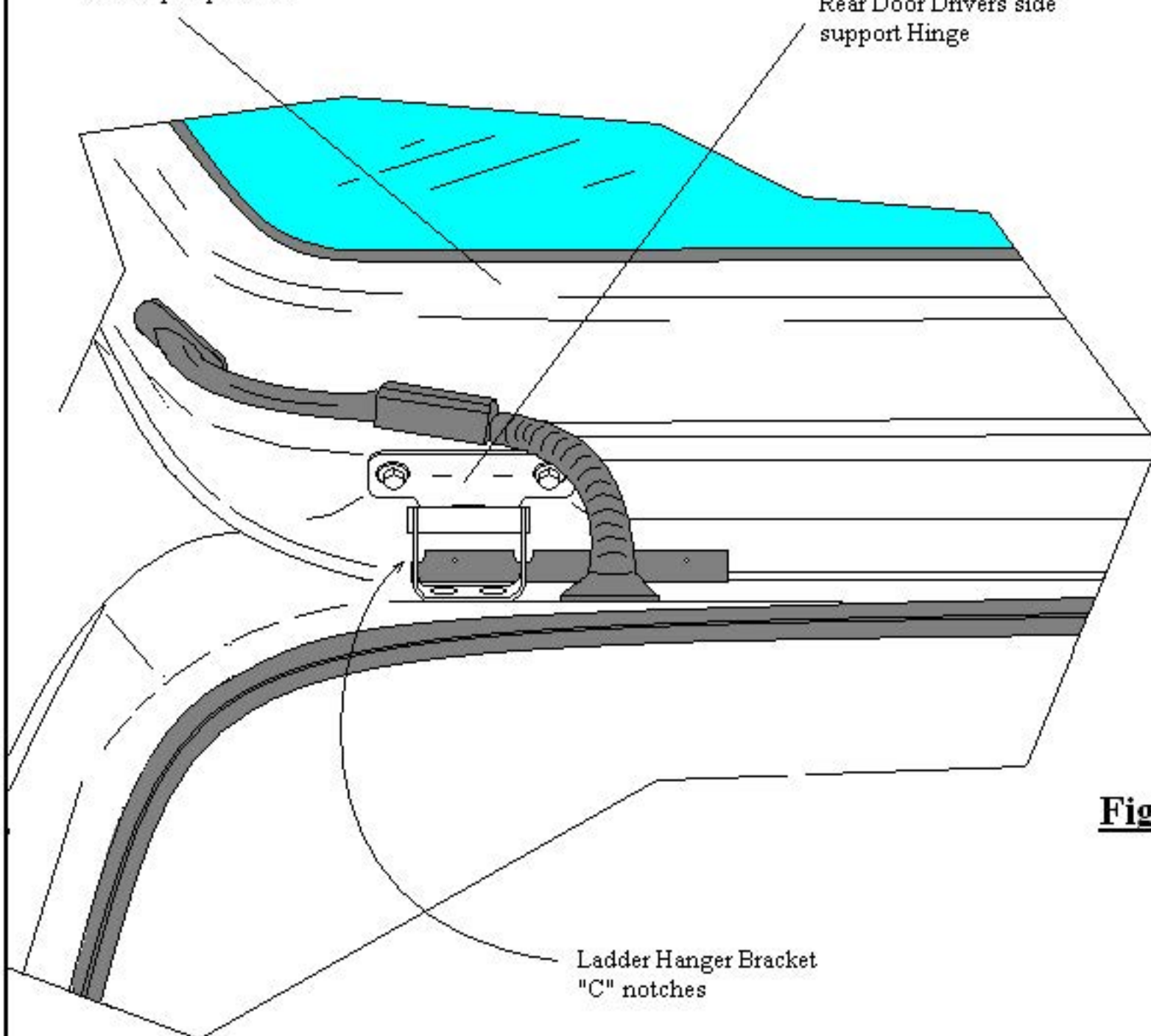
# GOBI TOYOTA 4 RUNNER 95-02 REAR DOOR LADDER WITH OR WITHOUT SPOILER INSTALLATION INSTRUCTIONS



# GOBI TOYOTA 4 RUNNER 95-02 REAR DOOR LADDER WITH OR WITHOUT SPOILER INSTALLATION INSTRUCTIONS

Rear Door Lift Gate  
in the open position

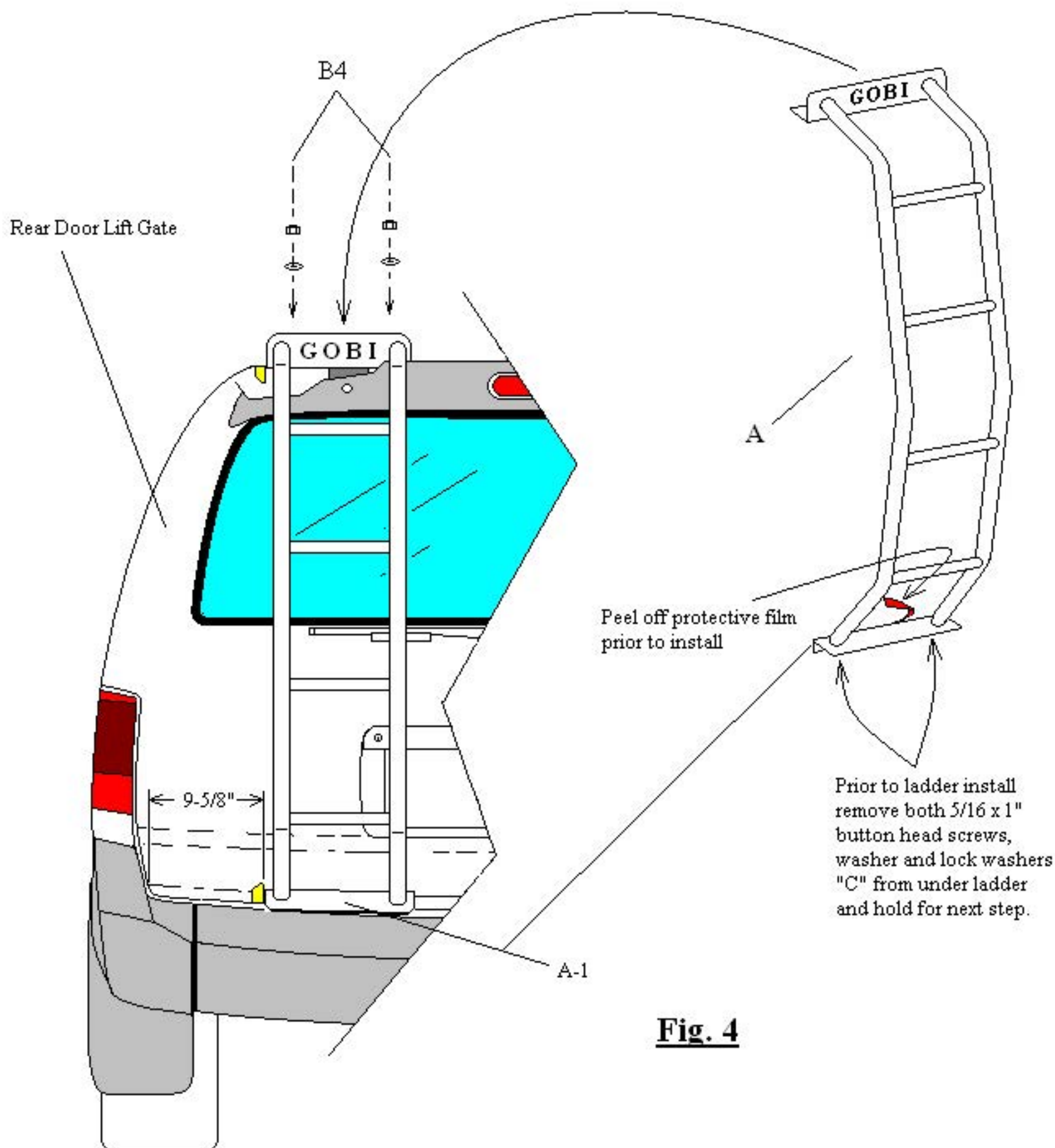
Rear Door Drivers side  
support Hinge



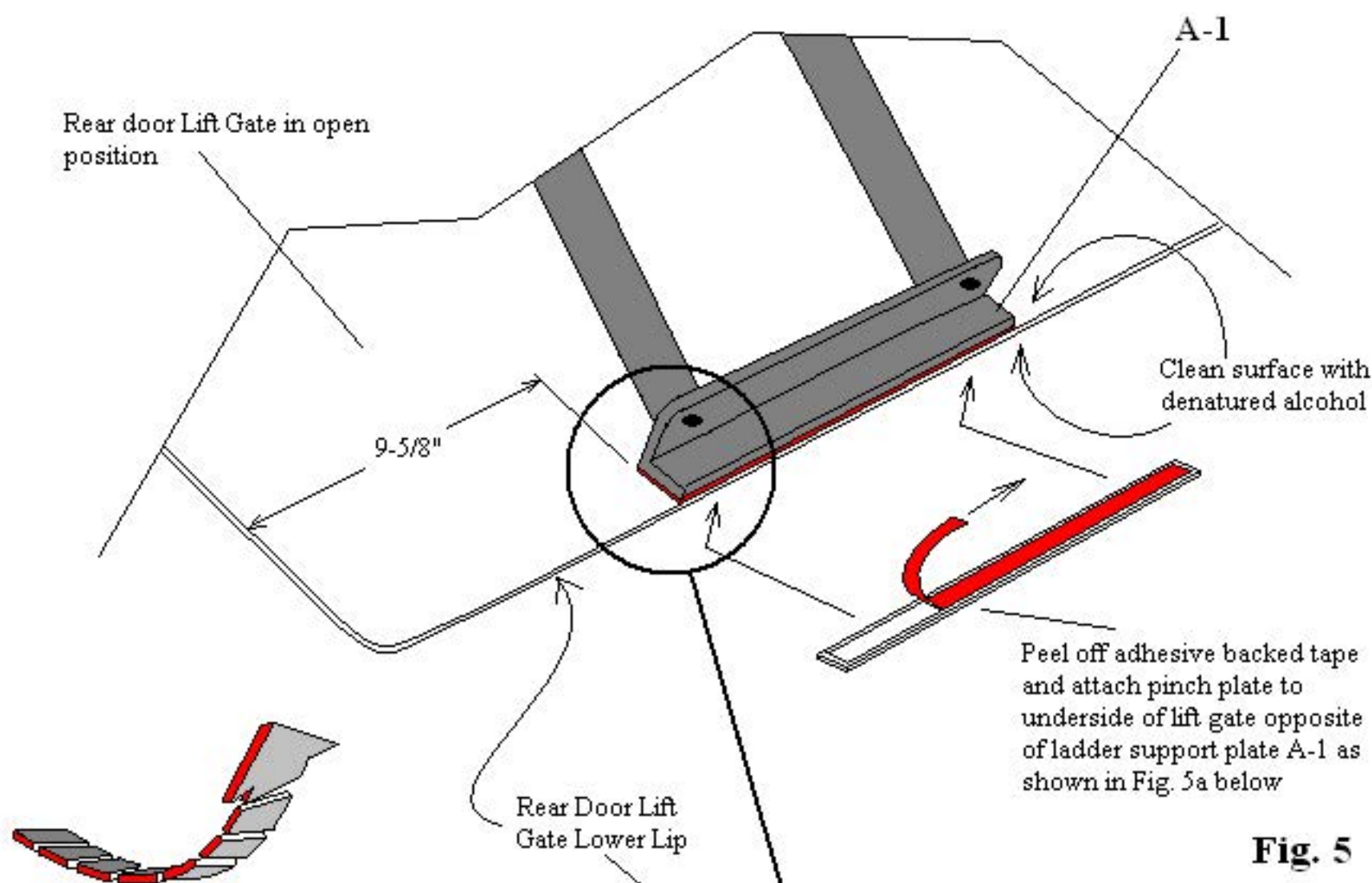
**Fig. 3**



# GOBI TOYOTA 4 RUNNER 95-02 REAR DOOR LADDER WITH OR WITHOUT SPOILER INSTALLATION INSTRUCTIONS

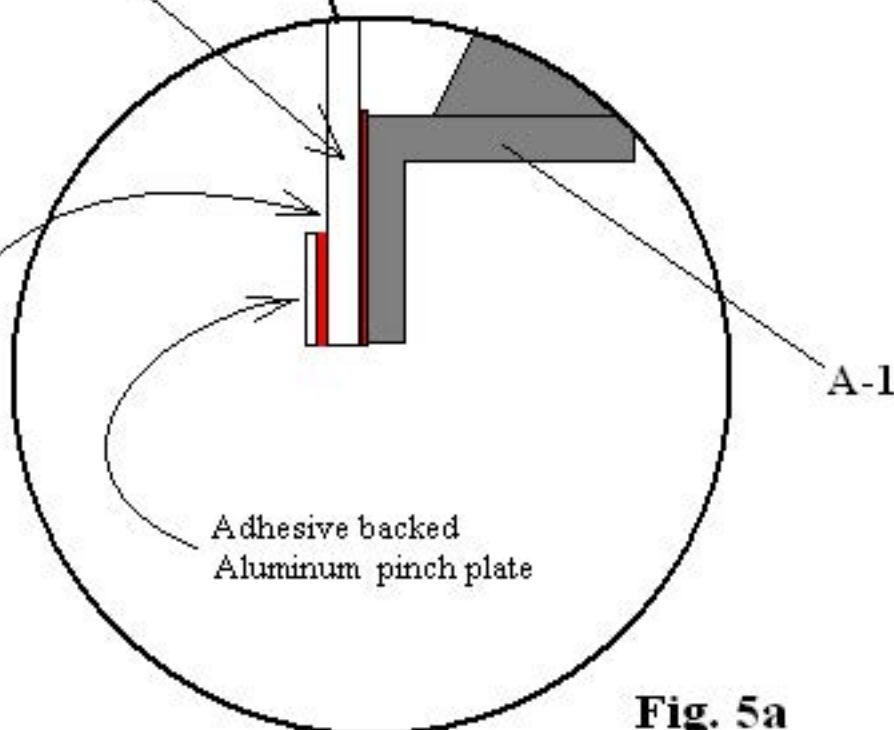
**Fig. 4**

# GOBI TOYOTA 4 RUNNER 95-02 REAR DOOR LADDER WITH OR WITHOUT SPOILER INSTALLATION INSTRUCTIONS



## Rear Door Open and Lifted for Clamp "B" installation

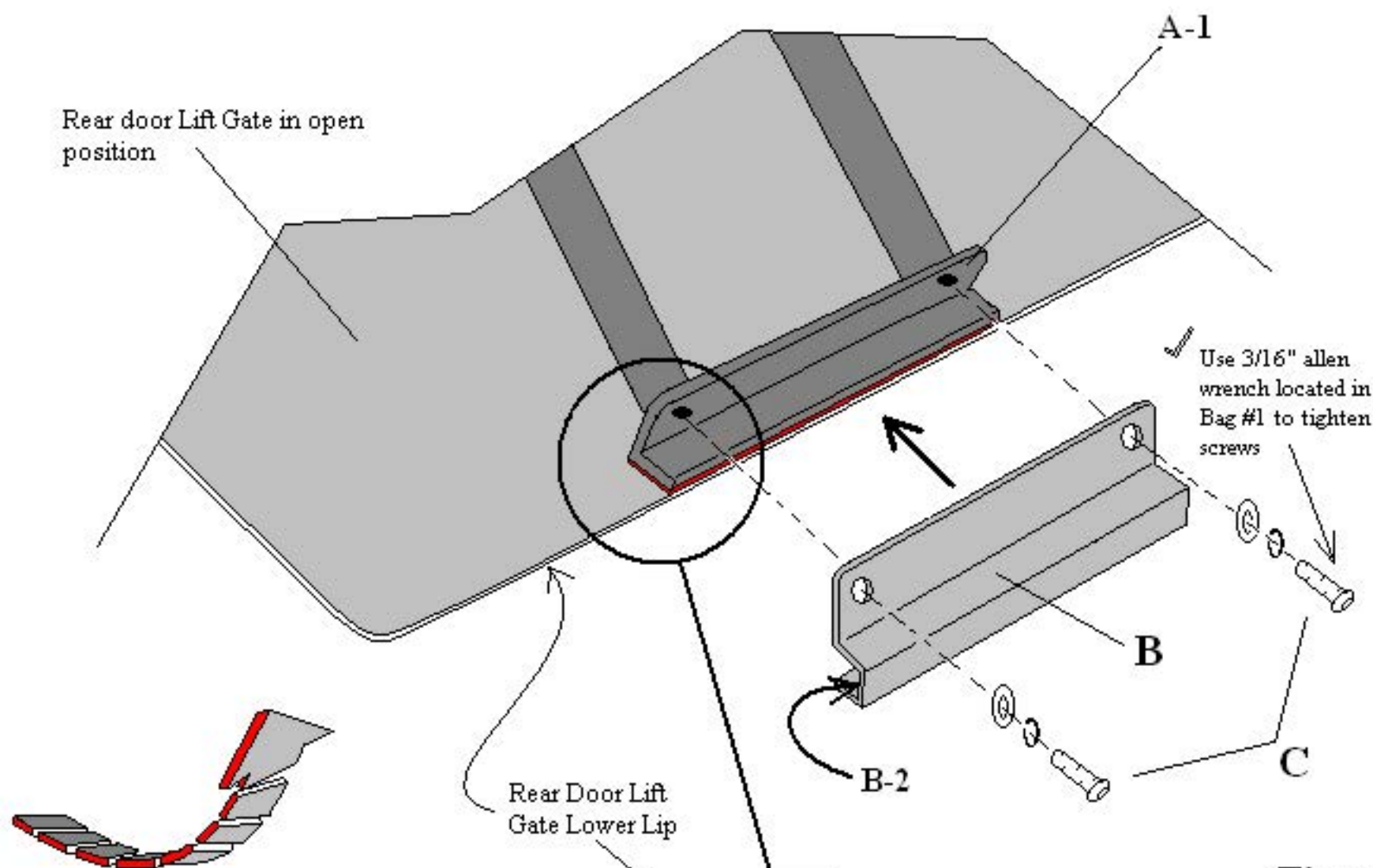
Clean the pinch plate contact area with denatured alcohol prior to install.



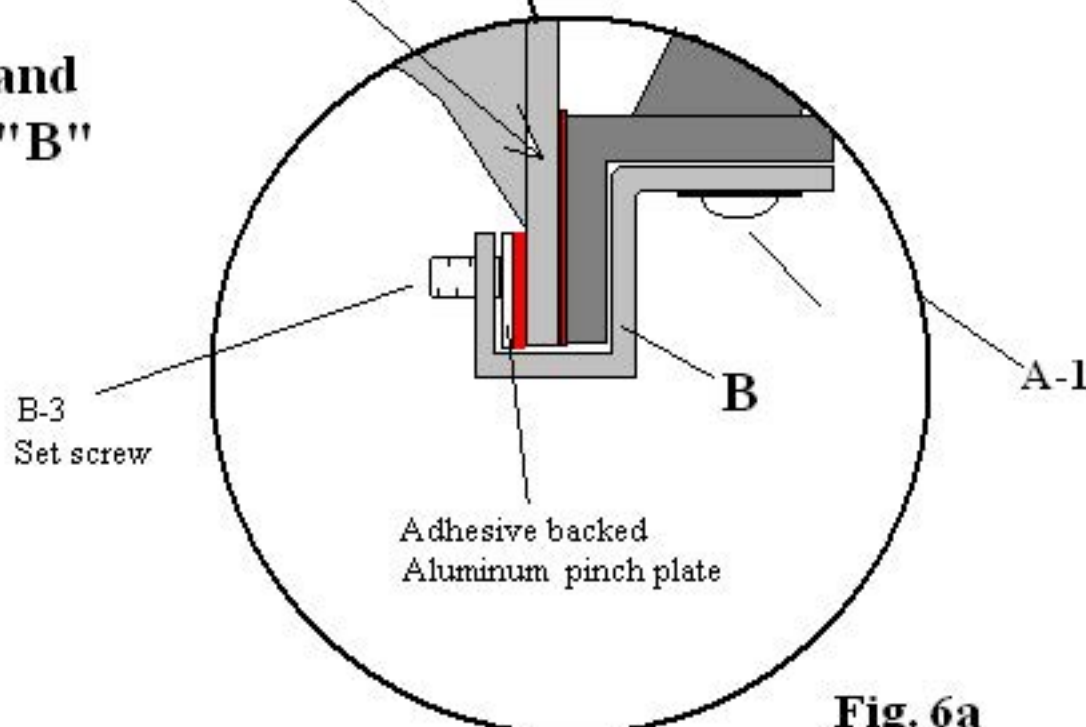


# GOBI TOYOTA 4 RUNNER 95-02 REAR DOOR LADDER WITH OR WITHOUT SPOILER INSTALLATION INSTRUCTIONS

*The Gobi ladder must be inspected before each use to make certain attachments are secure, and for evidence of Wear. Misuse of the ladder or failure to observe the manufacturer's instructions as to installation, proper Attachment and maintenance will void any warranties that may be implied by law.*

**Fig. 6**

## Rear Door Open and Lifted for Clamp "B" installation

**Fig. 6a**



## GOBI TOYOTA 4 RUNNER 95-02 REAR DOOR LADDER WITH OR WITHOUT SPOILER INSTALLATION INSTRUCTIONS

The Gobi ladder must be inspected before each use to make certain attachments are secure, and for evidence of Wear. Misuse of the ladder or failure to observe the manufacturer's instructions as to installation, proper Attachment and maintenance will void any warranties that may be implied by law.

### INSTALLATION INSTRUCTIONS:

- 1- Prior to install read all instructions carefully then refer to page 3 and make sure all parts are present.
- 2- Refer to page 4 using masking tape or the like attach a piece of tape as shown in Fig. 1 at the top of the rear door Lift Gate approximately 10-3/4" from the top left or drivers side edge of the rear door brake light. Continue to the bottom of the rear door Lift Gate and attach a piece of masking tape to the lower edge of the door as shown in Fig. 1 9-5/8" from the left edge.
- 3- Remove ladder hanger plate "C" supplied with your parts kit ***"Do not peel off the double back protective film at this time"*** carefully slide plate "C" as shown on page 5 Fig. 2 and Fig. 2a between the gap of the upper rear door Lift Gate and the main vehicle body. Once plate "C" has been slipped into the gap align the left edge of the ladder hanger plate "C" with the masking tape mark and pull ladder hanger plate "C" so that the inside edge "C-1" is up against the rear Lift Gate edge as shown in Fig. 2a page 5. Use an additional piece of masking tape to temporarily hold down plate "C" from moving at this time.
- 4- Refer to page 6 Fig. 3 open the rear door Lift Gate fully the ladder hanger plate "C" can now be seen under the Lift Gate door. Make sure that notches of the ladder hanger plate "C" align with the rear door support hinge as shown in Fig. 3. If the hanger plate needs to be moved either right or left so as not to interfere with the door hinge close the door and move the hanger plate accordingly. Once you have confirmed that the ladder hanger plate "C" notches are in line with the Lift Gate's door hinge remove the masking tape mark on the outside top of the Lift Gate previously attached and reposition so that the masking tape mark aligns with the ladder hanger plates new position. Leave the door down and closed at this time.
- 5- Refer to page 5 and remove the ladder hanger plate "C" from the door, clean the surface area where the ladder hanger bracket is to be attached with denatured alcohol. Peel off the protective double back tape film and re-fit ladder hanger plate "C" back in place and be sure that the inner edge "C-1" is in full contact with the rear door Lift Gate's upper edge as shown in Fig. 2. Once in place press down firmly and hold for at least 30 seconds.
- 6- Refer to page 9 Fig. 6 and remove the two 5/16-18 x 1" stainless button head screws, lock washers and flat washer "C" from the bottom of the ladder using the 3/16" Allen wrench supplied in your hardware kit and place nearby as the screws will be needed shortly.
- 7- Refer to page 8 Fig. 5 and Fig. 5a remove from your hardware kit lower ladder clamp "B". Remove for the lower ladder clamp "B" a (1/2" x 10") aluminum pinch plate with double back tape attached. As shown in Fig. 5 and Fig. 5a clean the area on the outside and inside bottom lip of the rear door lift gate where the ladder was previously placed with denatured alcohol then peel off the double back protective film from the aluminum pinch plate and attach to the inside door's lower lip as shown in Fig. 5a.
- 8- Refer to page 5 Fig. 2 and place the two 1" O.D. plastic spacer washers located in Bag #1 of your hardware kit one over each threaded stud of hanger plate "C".
- 9- Refer to page 7 and remove the double back protective film from the bottom of the ladder "A-1" then re-install ladder "A" back onto the hanger plate "C" as before. As you lower the ladder "A" onto the rear door lift gate pull down firmly as you align the lower ladder plate "A-1" to the masking tape mark previously made. With the help of another person keep lower ladder plate "A-1" in line with the bottom lower lift gate lip and hold in place for 30 seconds.

# GOBI TOYOTA 4 RUNNER 95-02 REAR DOOR LADDER

## WITH OR WITHOUT SPOILER

### INSTALLATION INSTRUCTIONS

The Gobi ladder must be inspected before each use to make certain attachments are secure, and for evidence of Wear. Misuse of the ladder or failure to observe the manufacturer's instructions as to installation, proper Attachment and maintenance will void any warranties that may be implied by law.

#### INSTALLATION INSTRUCTIONS:

- 10- Refer to page 9 Fig. 6 and Fig. 6a with the help of another person while still holding the ladder against the lift gate rear door, open lift gate and install clamp "B" to the bottom of ladder "A-1" and rear door lift gate as shown in Fig. 6. Thread the two 5/16-18 x 1" button head screws, lock washers and flat washers just recently removed back into the bottom of the ladder using the 3/16" Allen wrench and fully tighten at this time. Continue to the inside of clamp "B" and fully tighten screws "B-3" using the 1/8" Allen wrench supplied in your kit as shown in Fig. 6a.
- 11- Refer to page 7 Fig. 4 and install washers, lock washers and nuts "B-4" to the upper hanger plate "C" as shown in Fig. 4 and fully tighten, **"Do Not Over Tighten"**. Remove all previously applied masking tape markers. Installation is now completed.