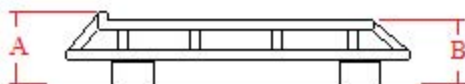


# GOBI FORD F-150 CREW CAB STEALTH ROOF RACK

## SPECIFICATIONS

## SPECIFICATION:

PRODUCT TYPE	Ford F-150 Crew Cab Truck roof rack with sun roof opening
WEIGHT	65 lbs. ( 29.48 kg. )
LENGTH	61" (1.55M)
WIDTH	51" (1.30M)
HEIGHT (STEALTH) (RANGER)	5" (12.7cm) front riser down to 3" (7.62cm) roof rack perimeter tube 6.5" ( 16.5cm) front riser down to 4.75" ( 12.07cm) roof rack perimeter tube
PAINT	Black textured semi gloss powder coat with Gray epoxy anti-rust undercoat
USABLE CARGO SPACE (with sun roof opening)	11.98 sq. ft. (1.10M <sup>2</sup> )
USABLE CARGO SPACE (no sun roof opening)	12.24 sq. ft. (1.14M <sup>2</sup> )
LOAD LIMIT	300 lbs. (138.08kg)
CARGO DECK	3/4" 9 gage expanded metal welded at all points
FRAME	16 gage 1.0" (.025mm) welded tubular frame
VEHICLE ATTACHMENT	4- 3/16" (4.72mm) formed clamp brackets black powder coated with a Gray epoxy anti-rust under coat. Clamp type roof top attachment
FRONT LIGHT BAR	4 Place light bar can be used with up to 8" diameter off road lights
REAR LIGHT BAR	2- independent rear light bar tabs
WIND DEFLECTOR	48" (121.92cm) Black powder coated aluminum wind deflector with 3 mounting brackets attaches to front light bar
HARDWARE	Stainless Steel

ROOF RACK HEIGHT  
FROM VEHICLE ROOF TOP  
GUTTERStealth: A= 8-1/2"  
B= 6-3/4"Ranger: A= 10-1/4"  
B= 8-1/2"